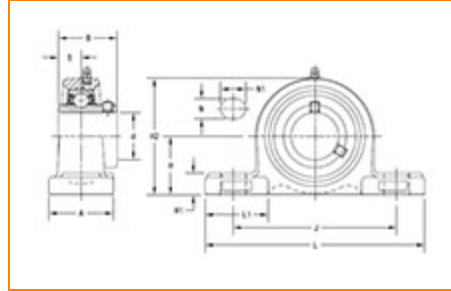




The Timken Company
 4500 Mt Pleasant St. NW
 N. Canton, OH 44720
 Phone: (234) 262-3000

E-Mail: CustomerCAD@timken.com • Web site: www.timken.com

Timken Part Number UCP205-16, UCP 200 Pillow Block Housed Units - Set Screw Locking



[Specifications](#) | [Dimensions](#) | [Basic Load Ratings](#)

Specifications

Bearing Number	UC205-16
Shaft Size d	1 in
Weight	1.80 lb 0.8 Kg
UPC Code	087796071957
Locking Style	Set Screw Locking
Housing Style	Two-Bolt Pillow Block

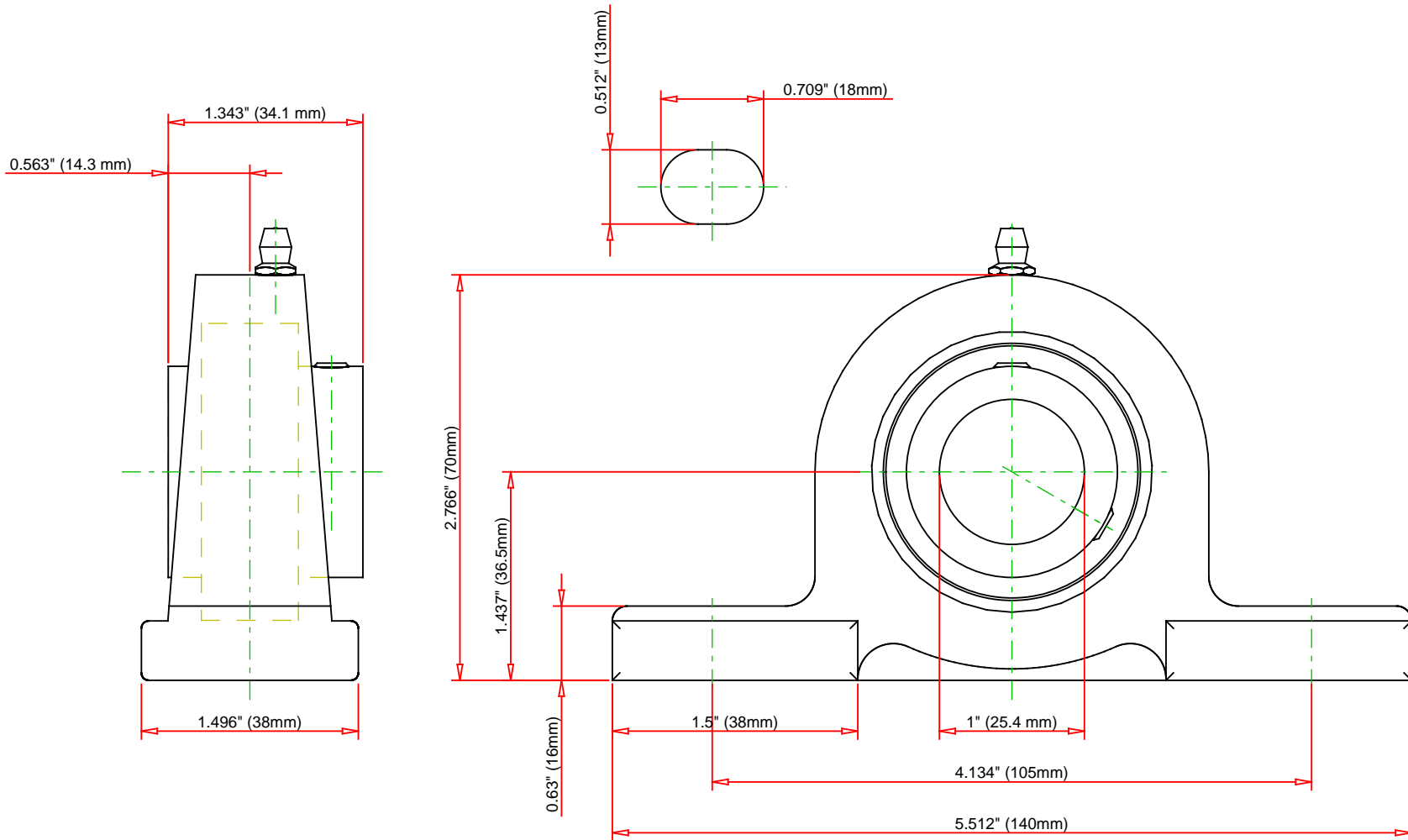
Dimensions

Base to Center Height H	36.50 mm 1.437 in
Total Length L	140.00 mm 5.512 in

Housing Width A	38.00 mm 1.496 in
Bolt Hole Spacing J	105.00 mm 4.134 in
Bolt Hole Size N	13.00 mm 0.512 in
Bolt Hole Length N1	18.00 mm 0.709 in
Foot Height H1	16.00 mm 0.630 in
Total Height H2	70.00 mm 2.766 in
Dimension L1	38.00 mm 1.500 in
Inner Ring Width B	34.10 mm 1.343 in
Center of Bearing from End S	14.3 mm 0.563 in

Basic Load Ratings

Static Load Rating	1765 lbf 7850 N
Dynamic Load Rating	3147 lbf 14000 N



Bearing Number	UC205-16			
Load Ratings - C _r	3147	lbf	14000	N
Load Ratings - C _{0r}	1765	lbf	7850	N
Weight	1.8	lb	0.8	kg
Bolt Size	M10			

TIMKEN

THE TIMKEN COMPANY
NORTH CANTON, OHIO USA

UCP205-16

UCP 200 Pillow Block Housing Units - Set
Screw Locking

Every reasonable effort has been made to ensure the accuracy of the information contained in this writing, but no liability is accepted for errors, omissions or for any other reason.

FOR DISCUSSION ONLY