



The Timken Company

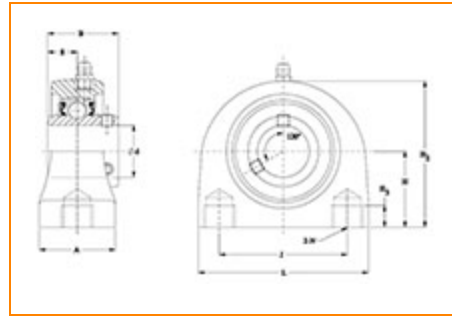
4500 Mt Pleasant St. NW

N. Canton, OH 44720

Phone: (234) 262-3000

E-Mail: CustomerCAD@timken.com • Web site: www.timken.com

Timken Part Number SUCSTB208-24/F, Corrosion Resistant Tapped Base Housed Units - Set Screw Locking



[Specifications](#) | [Dimensions](#) | [Basic Load Ratings](#)

Specifications

| | |
|-----------------------------|---------------------------|
| Housing Material | Cast Stainless Steel |
| Bearing Number | SUC208-24/F |
| Bore Size | 1 1/2 in |
| Lubrication Type | Standard Food Safe Grease |
| Weight | 2 Kg 4.4 lb |
| Locking Style | Set Screw Locking |
| Housing Construction | Tapped Base |

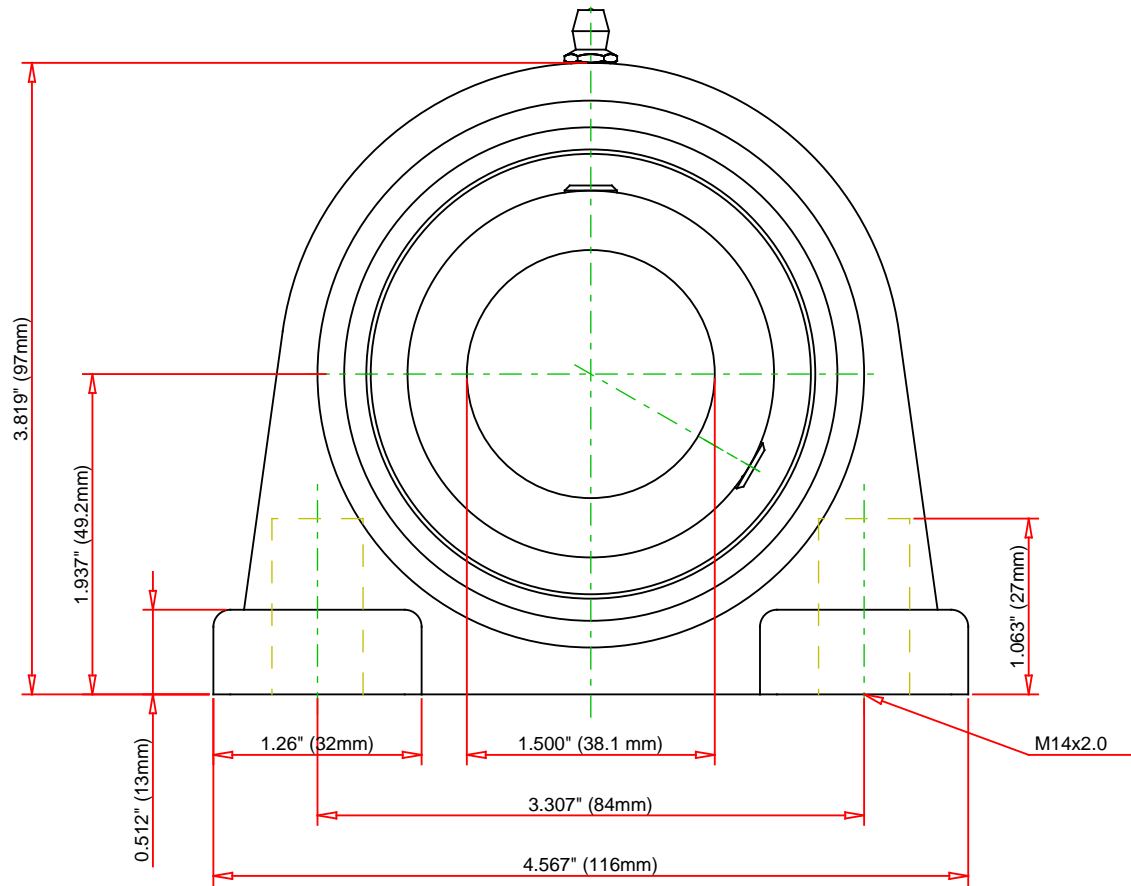
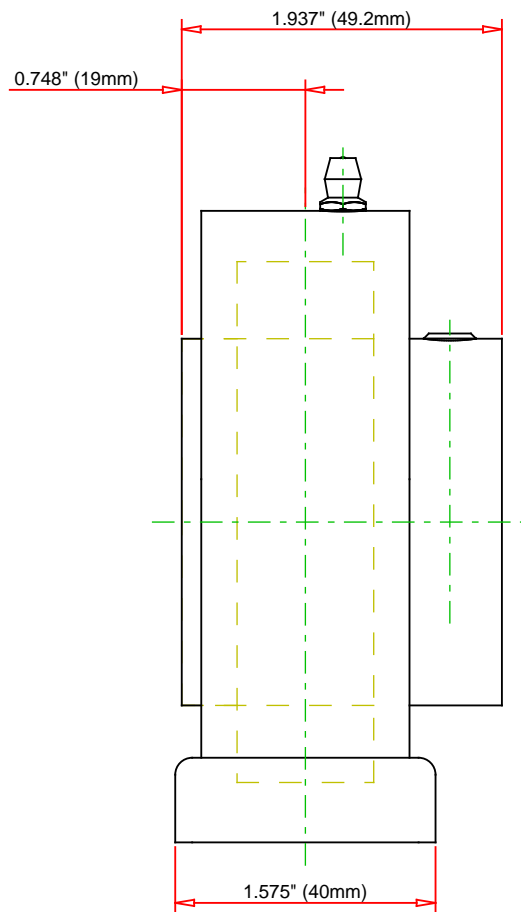
Dimensions

| | |
|---|---------------------|
| Housing Width A | 1.575 in 40 mm |
| Total Length L | 4.567 in 116 mm |
| Total Height H2 | 3.819 in 97 mm |
| Thread Length H3 | 1.063 in 27 mm |
| Bolt Hole Spacing J | 3.307 in 84 mm |
| Dimension L1 | 1.26 in 32 mm |
| Base to Center Height H | 1.937 in 49.2 mm |
| Foot Height H1 | 0.512 in 13 mm |
| Inner Ring Width B | 1.937 in 49.2 mm |
| Bearing_Center of Bearing from End S | 0.748 in 19 mm |

Basic Load Ratings

| | |
|--|---------------------|
| Static Load Rating | 3215 lbf 14300 N |
| Dynamic Load Rating¹ | 5576 lbf 24800 N |

¹ Based on 90×10^6 revolutions L_{10} life, for The Timken Company life calculation method. C_{90} and C_{a90} are radial and thrust values.



| | | | |
|--------------------------------|----------------------|-----|-------|
| Bearing Number | SUC208-24/F | | |
| Load Ratings - C _r | 5576 | lbf | 24800 |
| Load Ratings - C _{0r} | 3215 | lbf | 14300 |
| Weight | 4.4 | lb | 2 |
| Housing Material | Cast Stainless Steel | | |

TIMKEN

THE TIMKEN COMPANY
NORTH CANTON, OHIO USA

SUCSTB208-24/F
Corrosion Resistant Tapped Base Housed
Units - Set Screw Locking

Every reasonable effort has been made to ensure the accuracy of the information contained in this writing, but no liability is accepted for errors, omissions or for any other reason.

FOR DISCUSSION ONLY