



**The Timken Company**

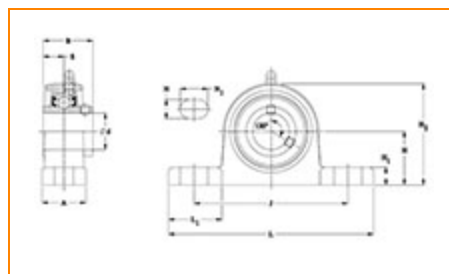
4500 Mt Pleasant St. NW

N. Canton, OH 44720

Phone: (234) 262-3000

E-Mail: [CustomerCAD@timken.com](mailto:CustomerCAD@timken.com) • Web site: [www.timken.com](http://www.timken.com)

## Timken Part Number SUCSP208-24/F, Corrosion Resistant Pillow Block Housed Units - Set Screw Locking



[Specifications](#) | [Dimensions](#) | [Basic Load Ratings](#)

### Specifications

<b>Housing Material</b>	Cast Stainless Steel
<b>Bearing Number</b>	SUC208-24/F
<b>Bore Size</b>	1 1/2 in
<b>Lubrication Type</b>	Standard Food Safe Grease
<b>Weight</b>	1.70 Kg 3.748 lb
<b>Locking Style</b>	Set Screw Locking
<b>Housing Construction</b>	Two-Bolt Pillow Block

### Dimensions

<b>Housing Width A</b>	1.937 in 49.2 mm
<b>Total Length L</b>	7.244 in 184 mm
<b>Total Height H2</b>	3.819 in 101 mm
<b>Inner Ring Width B</b>	1.937 in 49.2 mm
<b>Bearing_Center of Bearing from End S</b>	0.748 in 19 mm
<b>Bolt Hole Spacing J</b>	5.394 in 137 mm
<b>Dimension L1</b>	1.693 in 43 mm
<b>Base to Center Height H</b>	1.937 in 49.2 mm
<b>Foot Height H1</b>	0.551 in 14 mm
<b>Bolt Hole Size N</b>	0.669 in 17.00 mm
<b>Bolt Hole Length N1</b>	0.827 in 21.00 mm

## Basic Load Ratings

<b>Static Load Rating</b>	3215 lbf 14300 N
<b>Dynamic Load Rating<sup>1</sup></b>	5576 lbf 24800 N

<sup>1</sup> Based on  $90 \times 10^6$  revolutions  $L_{10}$  life, for The Timken Company life calculation method.  $C_{90}$  and  $C_{a90}$  are radial and thrust values.

